

Mapping Inequality in Atlantic County, New Jersey

Amanda Pobega

BA in Geography, Bowling Green State University

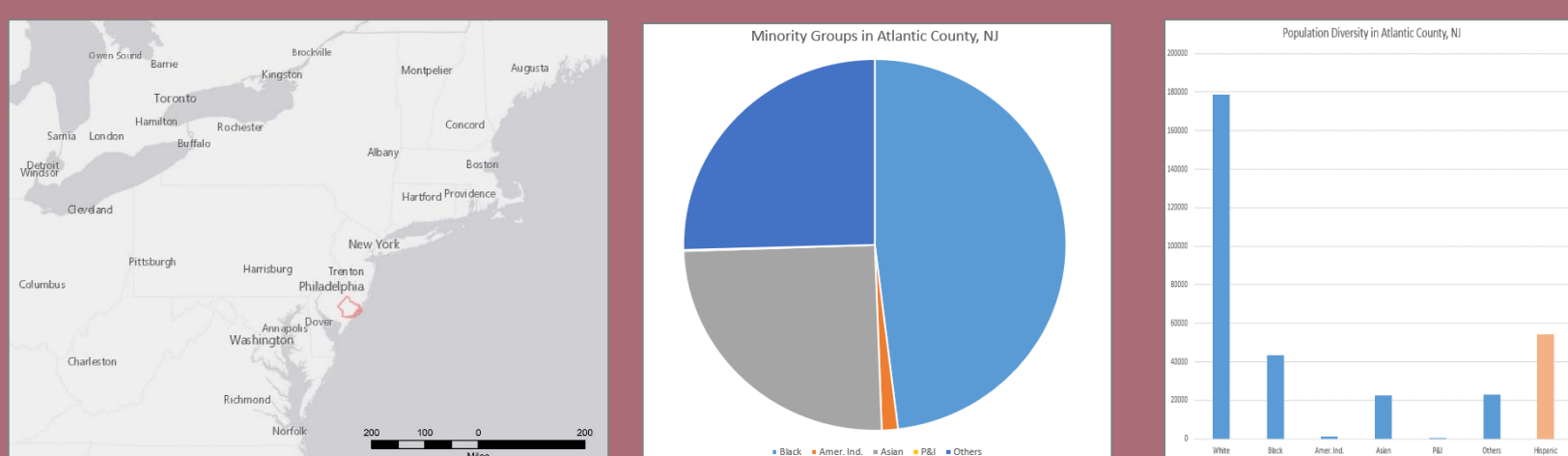
apobega@bgsu.edu

Abstract

Climate change is rapidly occurring all over the world. Rising sea levels are a major concern and I wanted to see how residents of a coastal city such as Atlantic City, New Jersey could be impacted by them. Using GIS, I found that many minorities and people with lower average household incomes reside on and near the coast. The elevation near Atlantic City is lower than the rest of the county. People are already experiencing an increase in flooding and not receiving the necessary help (PBS). Minorities living near the coast in Atlantic County, New Jersey are being impacted by climate change more than others living in the county.

Introduction

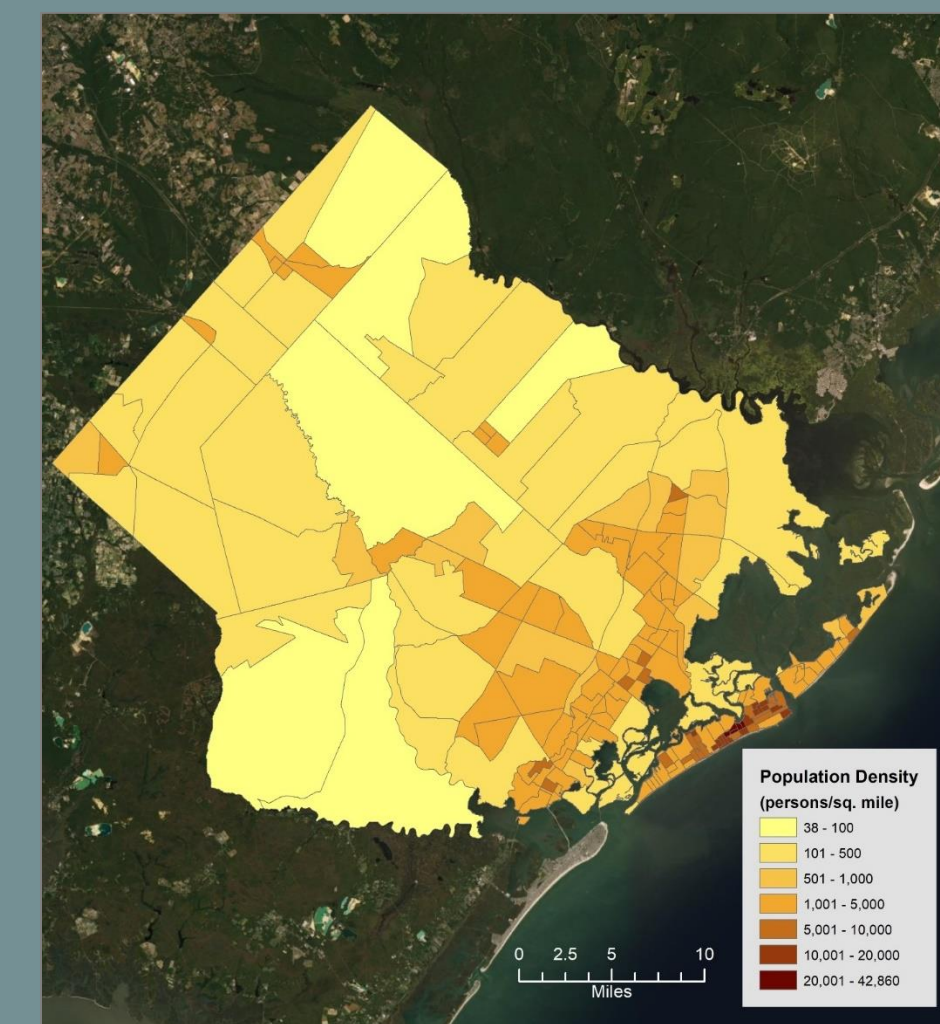
Atlantic County, New Jersey is geographically located on the east coast of the United States. Atlantic City is the largest municipality in the county. Atlantic County's largest source of revenue is tourism and entertainment. This is particularly true for Atlantic City, where casino and resort are big attractions. The casinos and resorts are also promoting service businesses such as restaurants, shops, spas, golf, and food. Before the pandemic of 2020, about 27 million people visit this area every year and that brings in about 6.5 billion dollars. The estimated population of Atlantic County was 263,670 in 2019. The population for Atlantic City was 37,743.



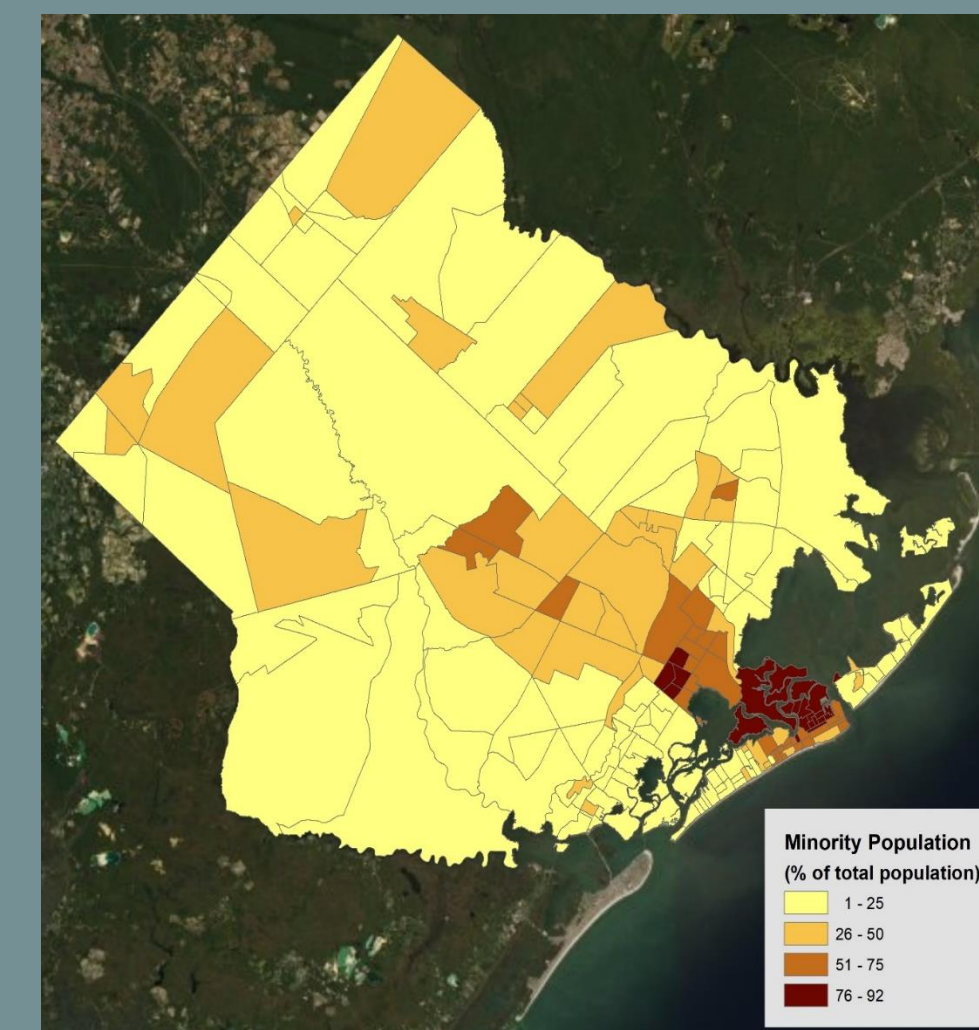
Methodology

GIS (Geographic Information Systems) was used to map the social, economic, and environmental inequality of Atlantic County. I then compared the maps to see if there were relations between inequalities and being impacted by climate change (rising sea levels).

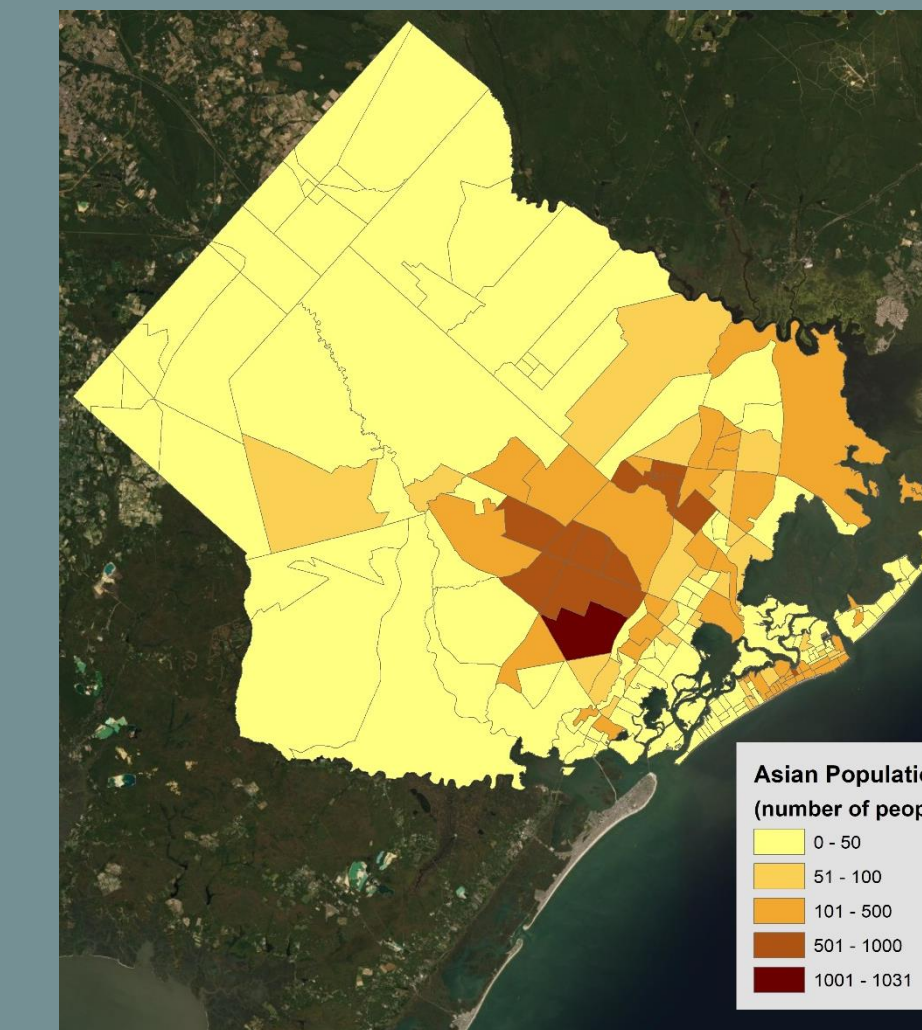
Results



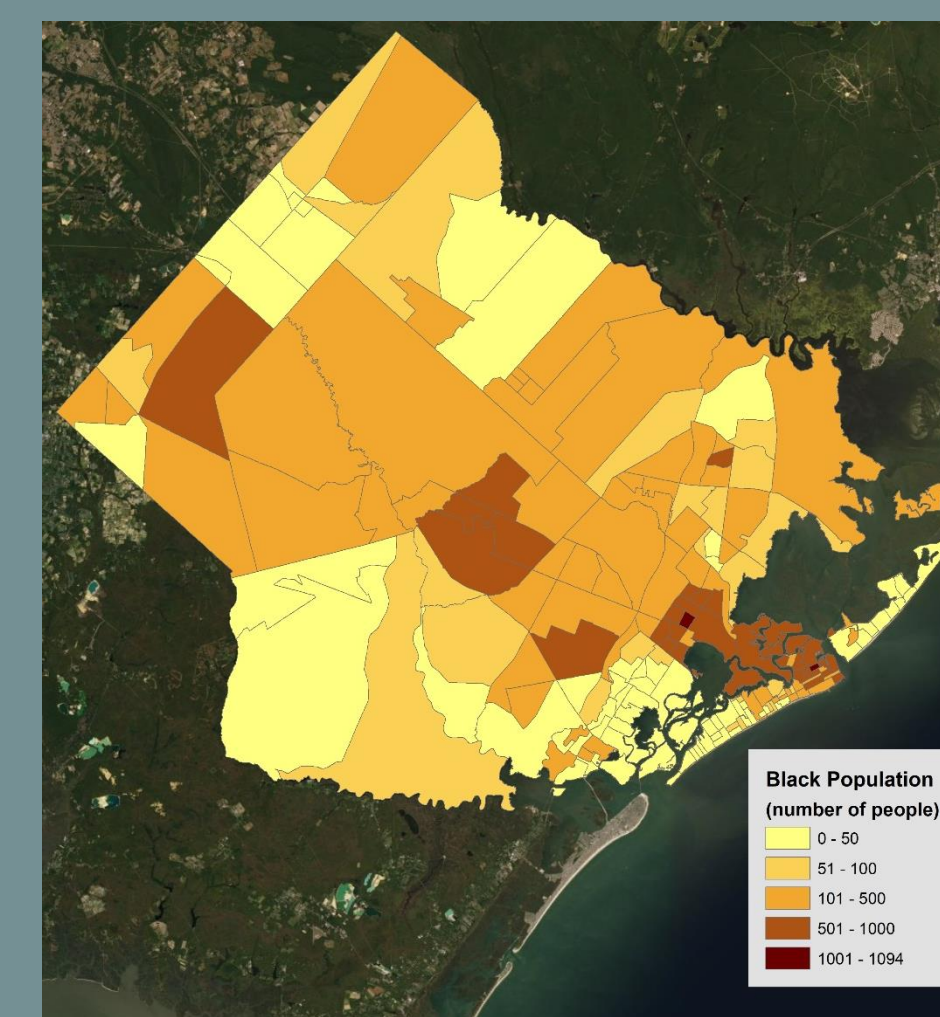
The largest densities of people are located on or near the coast.



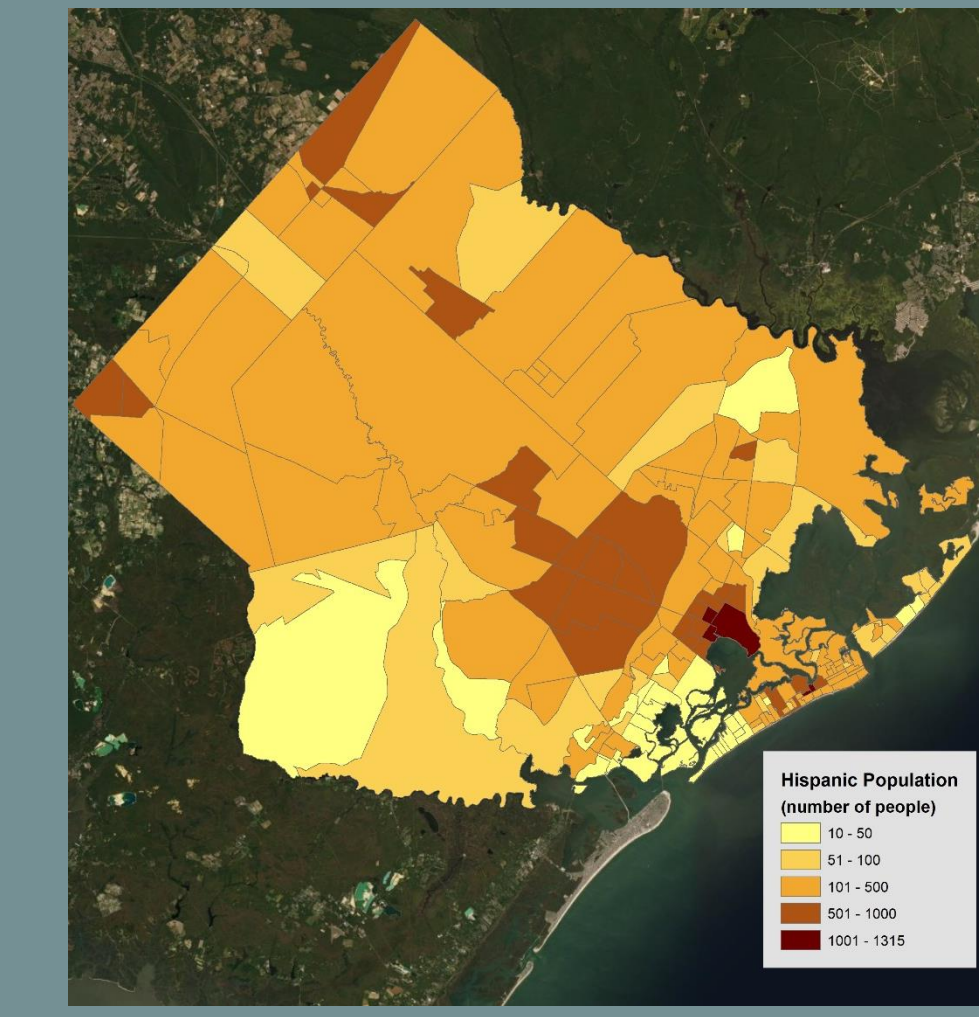
The area with the largest minority population is on the coast.



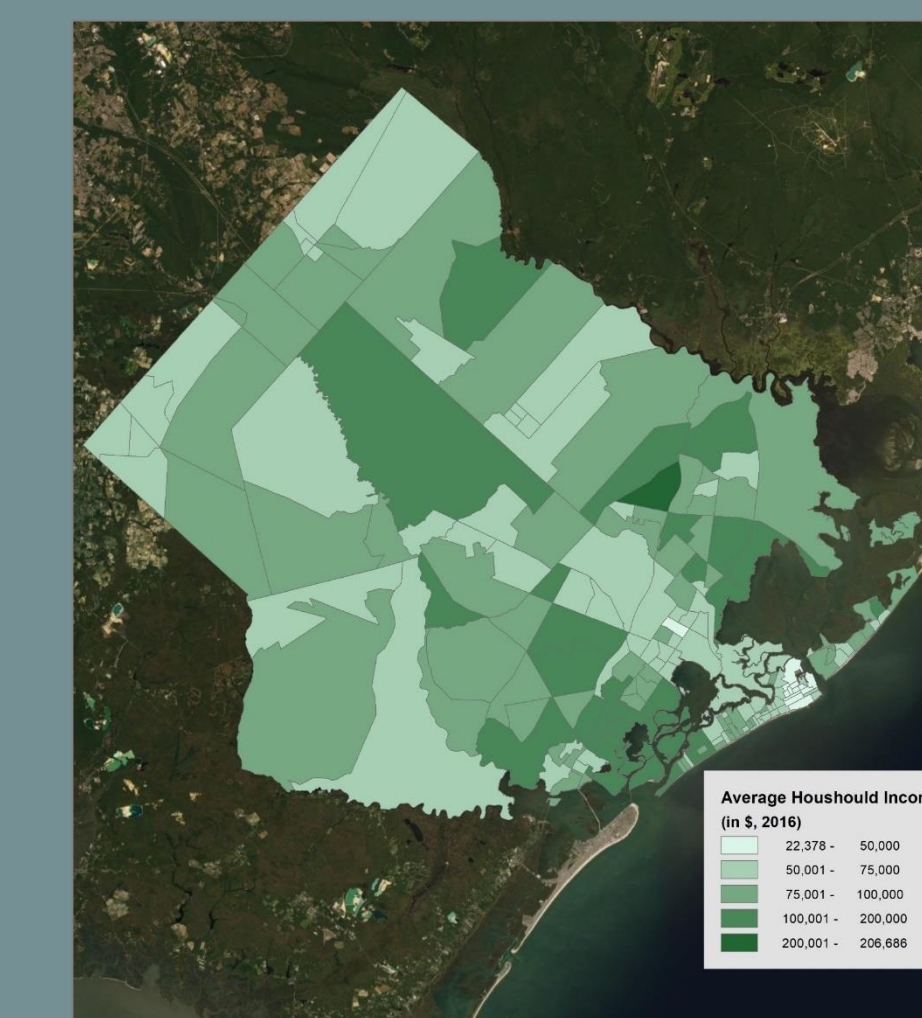
The Asian Population



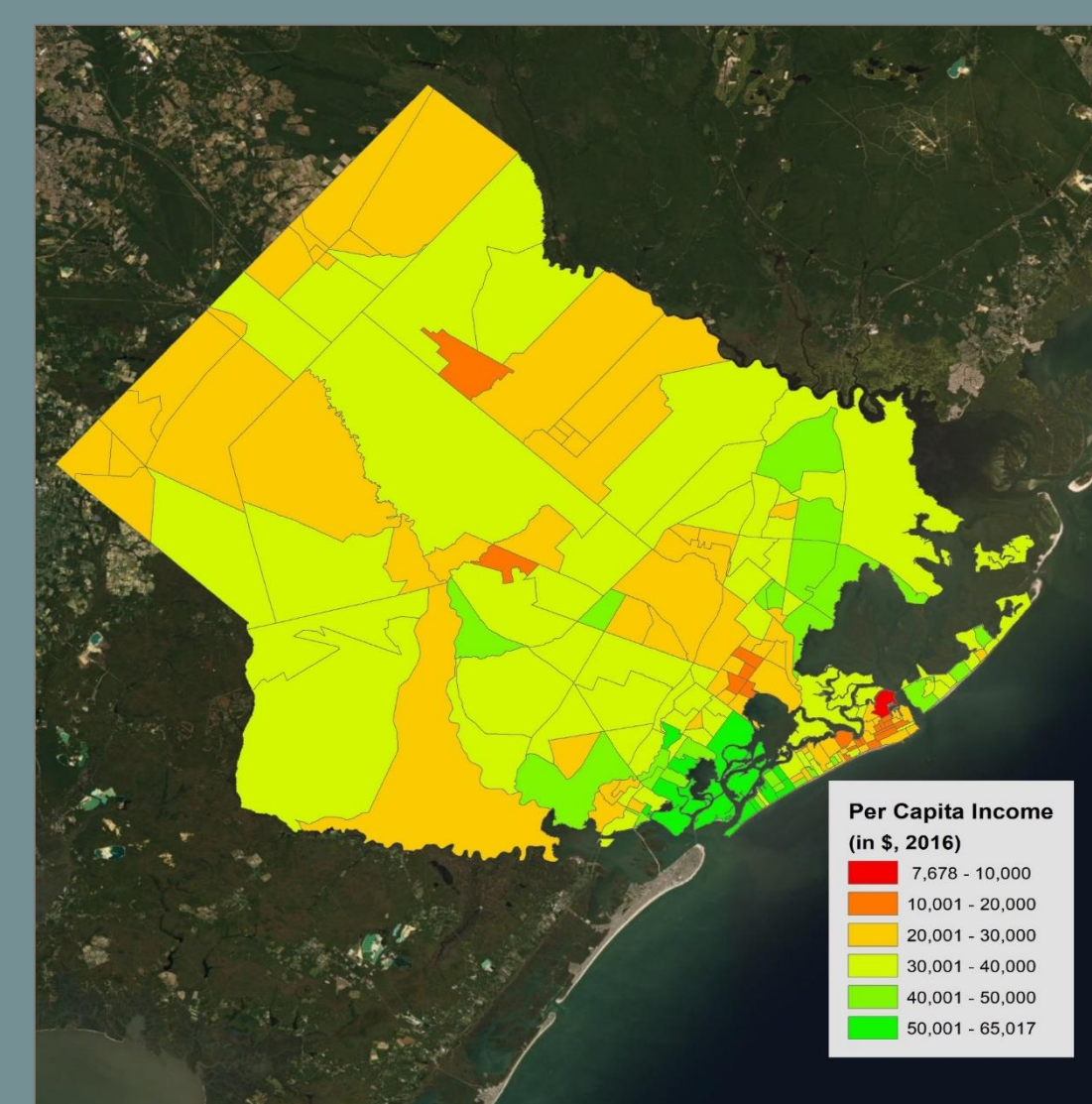
The Black Population



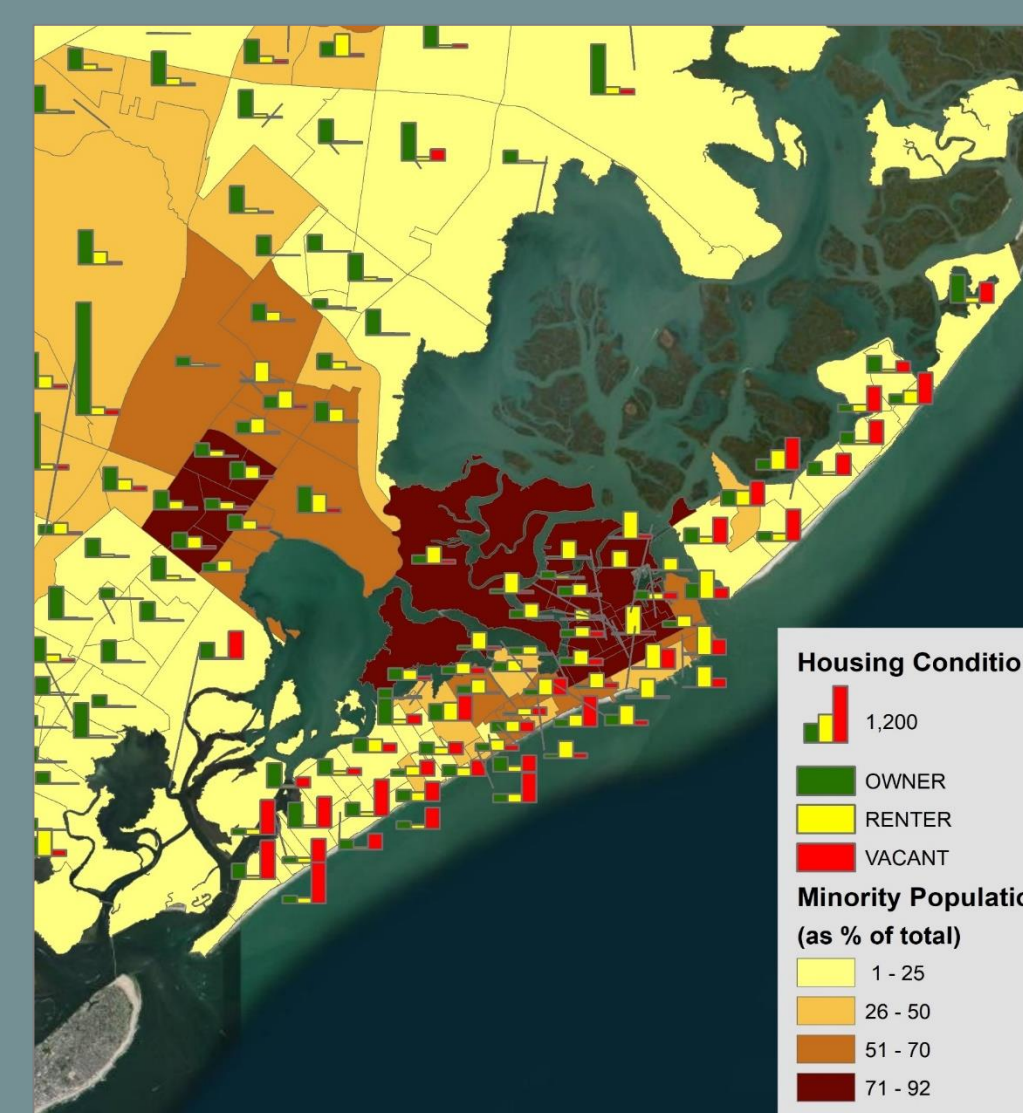
The Hispanic Population



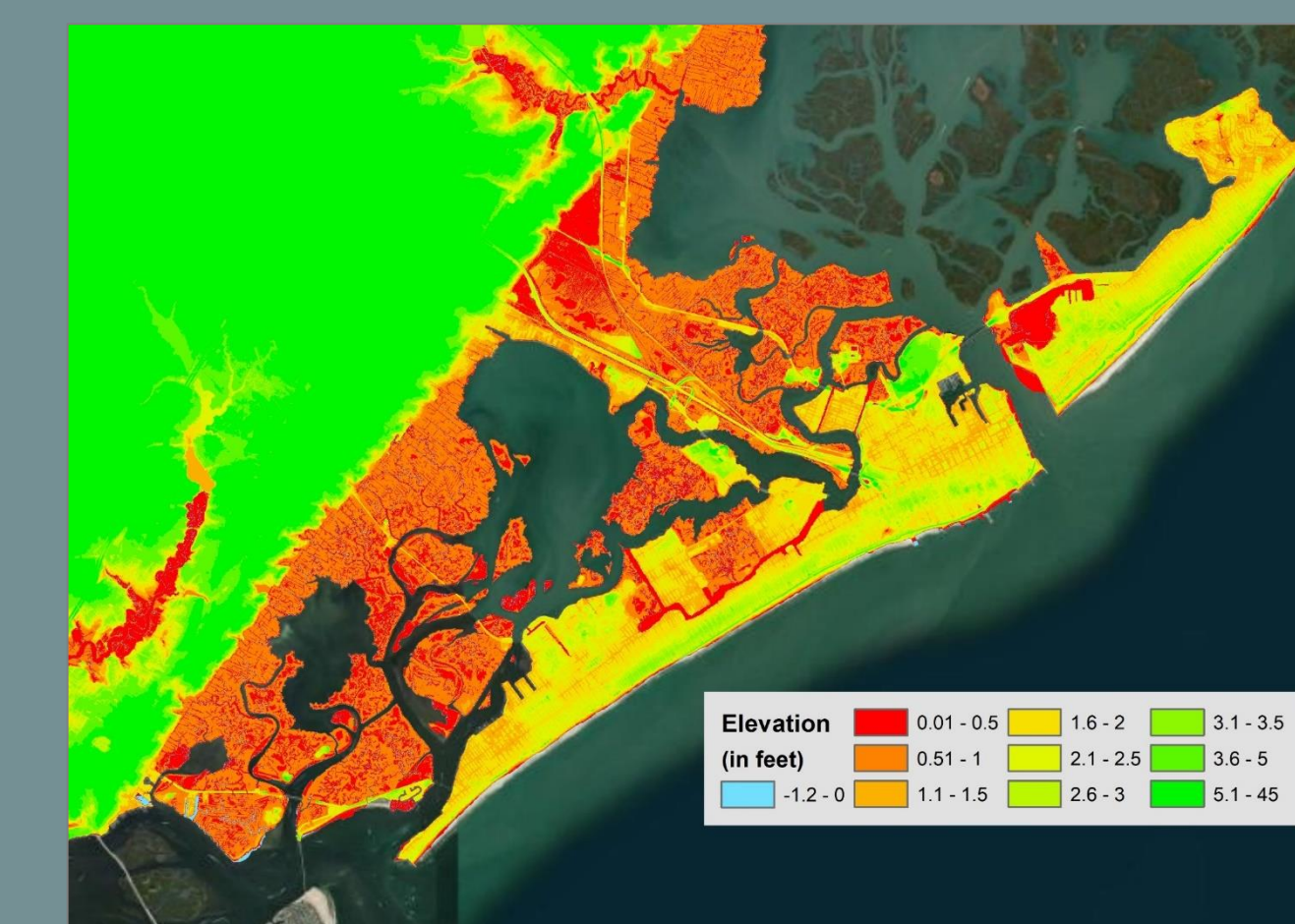
The average household incomes along the coast that are most frequent is \$20,000-\$75,000.



The per capita varies depending on location along the coast.



There is a variety of vacant, renter, and owner houses along the coast. In the area with the large minority population, there are few vacant houses.



The elevation of the land on and near the coast is 0.01-2.5 feet, which increases the chances of flooding. The area with many minorities is lower than most.

Data Source

2016 Esri Updated Demographics Complete Layout Variable List data was used. The data provided population, economic, and environmental information for Atlantic County.

Conclusion

In conclusion, maps generated from this project shows that there are clustered minority areas in east and northeast coast of Atlantic City. Economically, these areas are much worse than the other parts of the county. Instead of owning houses, large percentage of residents in the areas are renters. The areas are also facing potential flood problems with changing climate. The high inequality of economic, housing, and environmental problems are related to spatial distribution of racial groups, which should be addressed by the policy makers.

Sources

PBS: *In Atlantic City, Residents Feel Injustice of Climate Change*, NewsHour Productions LLC, 1 July 2017, www.pbs.org/newshour/show/atlantic-city-residents-feel-injustice-climate-change.