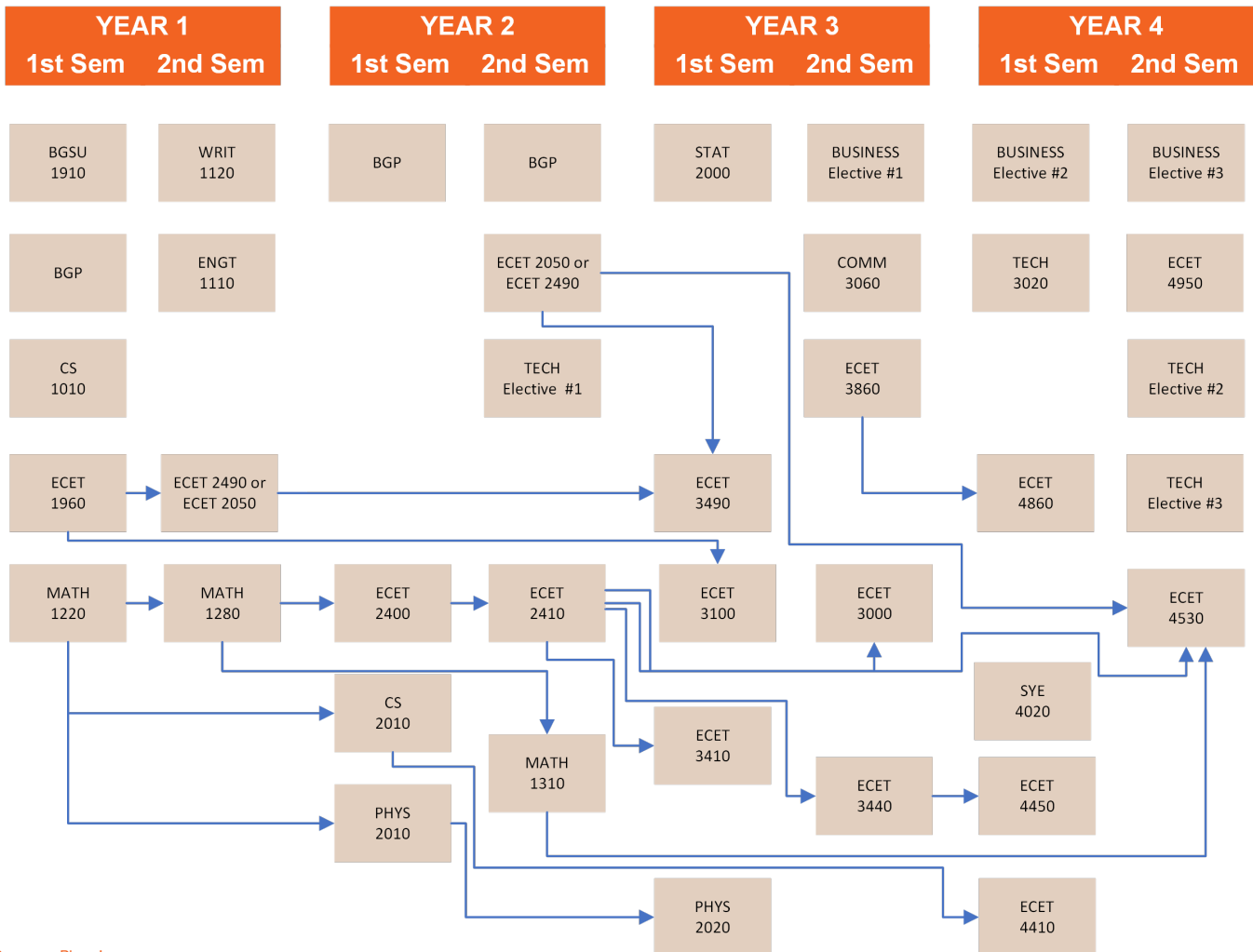


	Course Number	Credit Hrs	Taken	Grade	Course Name	Prerequisites/Advisor Notes	Course Offering*		
							F	Sp	Su
<b>FIRST YEAR FALL</b>	BGSU 1910	1			First Year Seminar		x		
	BGP	3				Human & the Arts / Cultural Diversity	x	x	x
	<b>CS 1010</b>	3			Intro to Python Programming		x	x	
	<b>ECET 1960</b>	3			Electrical-Electronic Systems		x	x	
	WRIT 1110 (BGP)	3			Seminar in Academic Writing	By Placement	x	x	x
	MATH 1220	4			College Algebra		x	x	x
	<b>Semester Total</b>	<b>17</b>							
<b>FIRST YEAR SPRING</b>	<b>ECET 2490</b> or ECET 2050	3			Dig Elec Cmpm Sys or Renewable Energy	ECET 1910 or ECET 1960		x	
	<b>ENGT 1100</b>	3			Basic Computer-Aided Design		x	x	
	<b>MATH 1280</b> (BGP)	5			Precalculus Mathematics	By Placement or MATH 1200 or MATH 1220	x	x	x
	WRIT 1120 (BGP)	3			Seminar in Research Writing	By Placement or WRIT 1010 or WRIT 1110	x	x	x
	<b>Semester Total</b>	<b>14</b>							
	<b>FIRST YEAR TOTAL</b>	<b>31</b>							
<b>SECOND YEAR FALL</b>	BGP	3				Social & Behavioral Science	x	x	x
	CS 2010	3			Programming Fundamentals	By Placement or MATH 1200 or MATH 99 or higher	x	x	
	<b>ECET 2400</b>	3			Electric Circuits	MATH 1280	x		
	<b>PHYS 2010</b> (BGP)	5			College Physics I	By Placement or MATH 1200 or	x	x	x
	<b>Semester Total</b>	<b>14</b>							
<b>SECOND YEAR SPRING</b>	BGP	3				Human & the Arts #2	x	x	x
	ECET 2050 or <b>ECET 2490</b>	3			Renewable Energy or Dig Elec Cmpm Sys	ECET 1910 or ECET 1960		x	
	<b>ECET 2410</b>	3			Electronic Circuits	ECET 2400		x	
	MATH 1310	5			Calculus & Analytic Geometry	MATH 1280, MATH 1290, or MATH 1300	x	x	x
	Technology Elec #1	3					x	x	
	<b>Semester Total</b>	<b>17</b>							
<b>SUMMER</b>	<b>TECH 2890</b>	1			Co-op	ECET 1960 (recommended)	x	x	x
	<b>Semester Total</b>	<b>1</b>							
	<b>SECOND YEAR TOTAL</b>	<b>32</b>							
<b>THIRD YEAR FALL</b>	ECET 3100	3			Programmable Logic Controllers	ECET 1960	x	x	
	ECET 3410	3			Electronic Devices	ECET 2410	x		
	ECET 3490	3			Digital Computer Analysis	ECET 2490	x		
	PHYS 2020 (BGP)	5			College Physics II	PHYS 2010	x	x	x
	STAT 2000	3			Using Statistics		x	x	
	<b>Semester Total</b>	<b>17</b>							
<b>THIRD YEAR SPRING</b>	Business Elec #1	3					x	x	x
	COMM 3060 (BGP)	3			Interpersonal Communications		x	x	x
	ECET 3000	3			Electric Machinery and Controls	ECET 2410		x	
	ECET 3440	3			Electronic Communication Circuits	ECET 2410		x	
	ECET 3860	3			Digital Communication Networks I			x	
	<b>Semester Total</b>	<b>15</b>							
<b>SUMMER</b>	TECH 3890	1			Co-op		x	x	x
	<b>Semester Total</b>	<b>1</b>							
	<b>THIRD YEAR TOTAL</b>	<b>33</b>							
<b>FOURTH YEAR FALL</b>	Business Elec #2	3					x	x	x
	ECET 4410	3			Instrumentation	ECET 2410 & CS 2010	x		
	ECET 4450	3			Wireless Communication Systems	ECET 3440	x		
	ECET 4860	3			Digital Communication Networks II	ECET 3860	x		
	TECH 3020 (BGP)	3			Technology Systems in Societies	Junior or Senior status	x	x	x
	<b>Semester Total</b>	<b>15</b>							
<b>FOURTH YEAR SPRING</b>	Business Elec #3	3					x	x	x
	ECET 4530	3			Digital Computer for Process Control	ECET 2410, ECET 2490, CS 2010 & MATH 1310		x	
	ECET 4950	3			Senior Capstone		x	x	
	Technology Elec #2	3					x	x	
	Technology Elec #3	3					x	x	
	<b>Semester Total</b>	<b>15</b>							
	<b>FOURTH YEAR TOTAL</b>	<b>30</b>							
	<b>DEGREE TOTAL</b>	<b>122</b>							

This is not an official graduation plan but a tool to use along with your audit and check-sheet  
Assuming a MATH placement of 1220, a WRIT placement of 1110, and 2 years of high school language

\*Fall (F), Spring (Sp), Summer (Su)



**Program Planning**

The student, in cooperation with an advisor, should use a Program Guide and the corresponding undergraduate

**Matriculation**

Full admittance to major in a College of TECHNOLOGY, Architecture and Applied Engineering program becomes effective when a student has:

1. Attained an overall BGSU GPA of at least 2.25 for all courses taken prior to applying for matriculation and a 2.5 in courses in the major;
2. Complete a cooperative educ. experience-TECH 2890(Aviation, Architecture, LDT and QS majors are exempt from this requirement);
3. Completed with a grade of "C" or better in all bold courses, as specified on program checksheets;
4. Applied for matriculation. Applications are available from the Undergraduate Student Services Offices website.

The steps listed above must be completed before students will be permitted to register for 3000 and 4000 level courses in the College of Technology, Architecture and Applied Engineering.

**Co-op**

All students in the College are required to complete 1-2 co-ops, depending on your major. THIS IS A COURSE. It carries credit and is graded. Full-time or part-time (20hrs/week) for two consecutive semesters, paid and must be directly related to your major. All students MUST complete the Co-op Orientation available in Canvas.